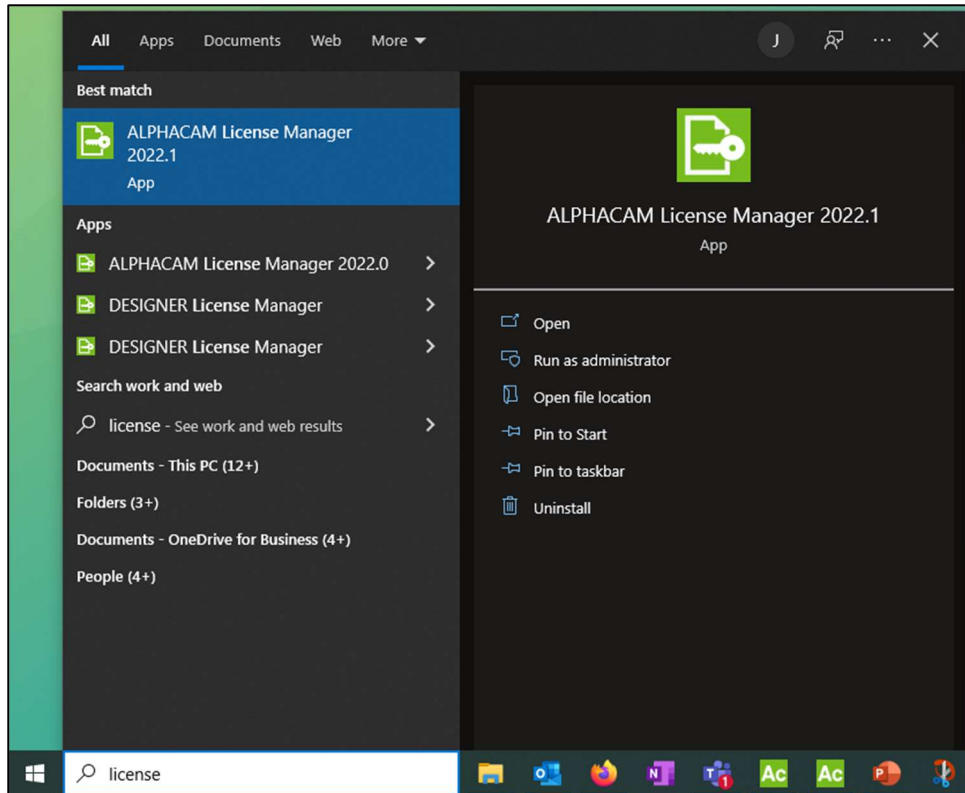
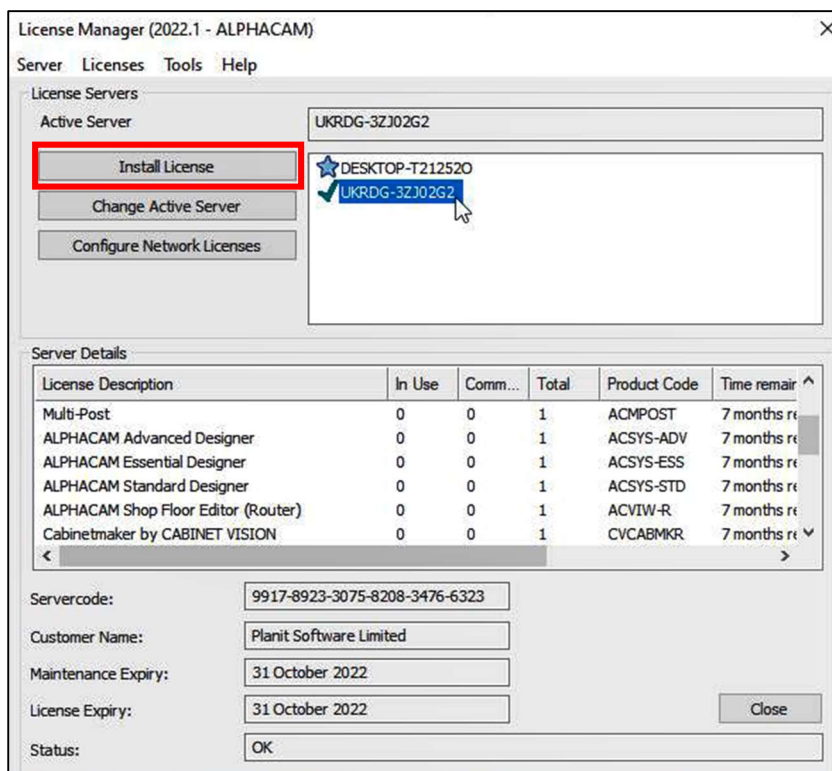


ALPHACAM 2022.1 has a lot of new features and we've also made some changes to the licensing. To run ALPHACAM 2022.1 you will need to update your license manually by following these steps.

1. Type 'ALPHACAM License' into Windows Search and start the **ALPHACAM License Manager 2022.1** app.



2. In the License Manager, select your license and 'Install License'. Then select *Next > Next > Next > Finished*.



If you have a **Network License** it will need configuring. We have automatically converted your license to the new format which splits functionality up into the following 'Multipliers'.

- xSimultaneous
- xPositional
- xSolids
- xNesting
- xAutomation
- xConstraints
- xFixtures
- xAPI
- xRobotics
- 5-Axis Advanced

3. Add **':Core 3 Axis Solution'** first. Then you will see that the new 'Multipliers' become available, which you can set to either Optional or Reserved in the usual way.

